

## Data-Driven Innovation: Leveraging Analytics with an Enterprise Legal Management System

How KBR implemented TeamConnect and Workflow Automation to drive visibility and innovation for its legal team



### The Company

KBR delivers science, technology and engineering solutions to governments and companies around the world. The Houston-based company has over 28,000 employees and a history as one of the U.S government's farthest-reaching contractors with additional global locations.

### The Challenge

Like many teams, KBR's legal department invested countless hours in manual document tracking and processes, including logging daily requests from other departments, invoice reporting, spreadsheet data entry, etc. While already driving innovation within its legal division, the leading engineering organization saw an opportunity to enhance its team's experience, efficiency, and time management through the adoption of an integrated technology system.

“Instead of having to integrate with a different vendor, we liked the fact that we've had a long-standing relationship with [Mitratesch], and it has been easy to work with. We thought it'd be easier and better— communication-wise and system-wise— to have one vendor for all of our products.”

— Allison, Sr. Manager of Legal Operations & Finance at KBR

# The Solution

KBR's decision to deploy Mitratech's TeamConnect and workflow automation came down to two key differentiators:

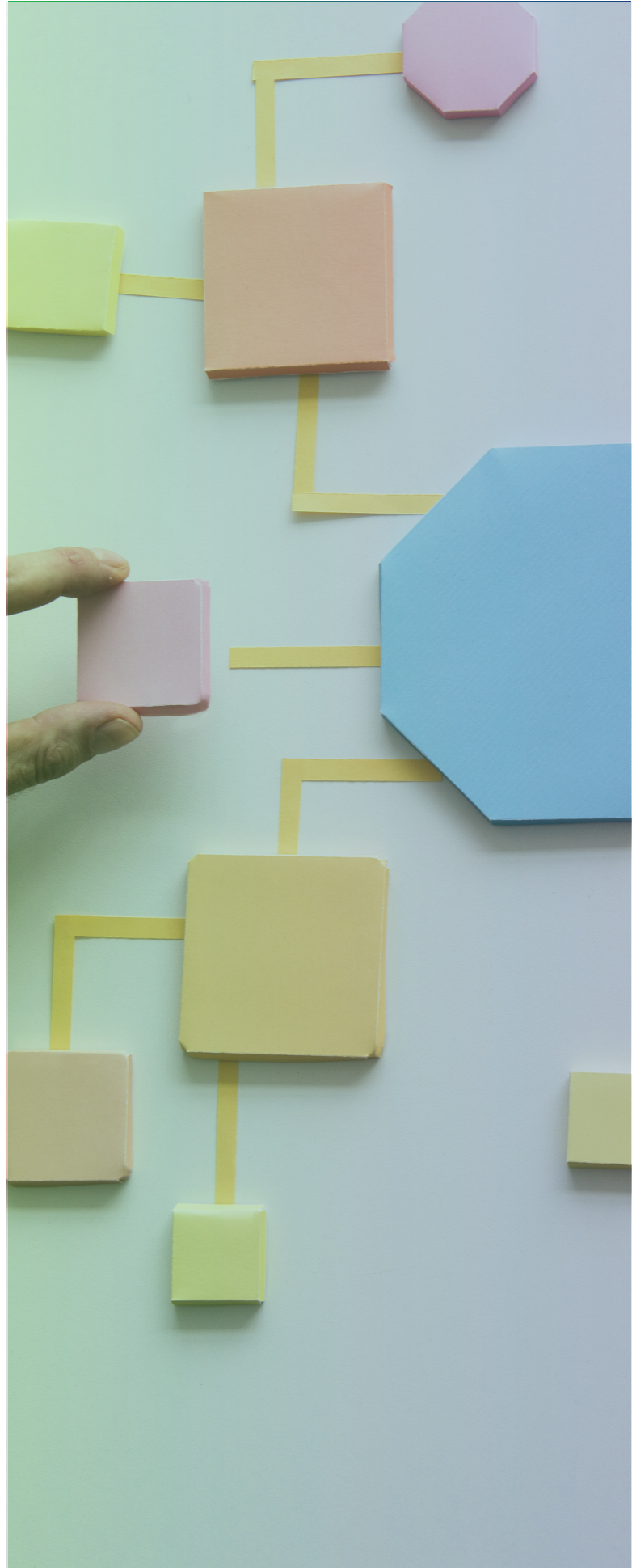
1. **Ease of use**
2. **Visibility through analytics**

KBR needed a partner that could not only empower its legal team with the tools necessary to strip away manual processes, but also make the transition seamless. Teamconnect's intuitive interface simplifies the matter management process and creates a single source of truth for information, allowing for an easy-to-use, hassle-free adoption experience.

“It [TeamConnect] is really user-friendly. If you just take a minute and actually look at it, you can figure most things out.”

— **Allison, Sr. Manager of Legal Operations & Finance at KBR**

KBR's legal team also sought analytics to quantify its success. By providing access to robust reporting and centralized data, TeamConnect makes it easy for the general counsel to pull reports on matters and progress each month with quantifiable, granular metrics. Rather than spending hours patching together data from disparate systems, KBR's legal team can now share visibility into their projects in real-time and work cross-departmentally. Additionally, added workflows helped automate many of the daily manual processes and break down roadblocks that previously existed in emails.



# The Results

While an intuitive interface and quick time to value were important factors in KBR's decision, the opportunity to drive innovation with a single platform solidified Mitrastech as the company's integrated matter management and workflow automation partner. Since deploying TeamConnect, KBR's legal team has been able to drive efficiency, save time, and provide a single source of institutional knowledge with one proven partner.

In addition to offering an easy-to-adopt interface for users, TeamConnect also provided KBR with unique process capabilities, including:

- **The ability to connect documents to records**
- **"Drag-and-drop" functionalities.**
- **Built-in security features**
- **Version control**
- **Document assembly & more!**

Most importantly, TeamConnect's endless opportunities for workflow automation, litigation hold management, contract management, and spend management integrations ensure that the solution will scale to meet KBR's evolving needs for years to come.





# About Mitratesch

Mitratesch is a proven global technology partner for corporate legal, risk & compliance, and HR professionals seeking to maximize productivity, control expense, and mitigate risk by deepening operational alignment, increasing visibility, and spurring collaboration across their organization.

With Mitratesch's proven portfolio of end-to-end solutions, organizations worldwide are able to implement best practices and standardize processes across all lines of business to manage risk and ensure business continuity.

Mitratesch serves over 1,800 organizations worldwide spanning more than 160 countries.

For more info, visit: [www.mitratesch.com](http://www.mitratesch.com)

**MITRATESCH**